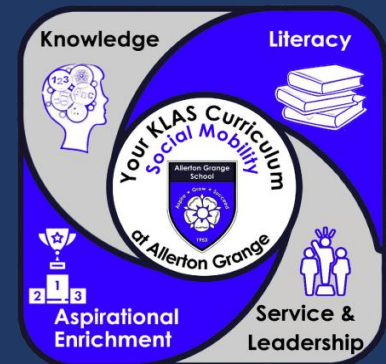


# Welcome to Allerton Grange School

*23 June 2026*



- **An outstanding enrichment programme, with 100 educational visits and 10 Duke of Edinburgh expeditions** taking place this academic year, providing students with memorable experiences beyond the classroom.
- **The annual school production of *Little Shop of Horrors*** showcased the creativity, confidence and talent of students across music, drama and performing arts.
- **Sports Championship Week and a wide range of sporting opportunities** gave students the chance to represent the school, develop teamwork and celebrate success in sport.
- **100% of students participated in extracurricular activities**, with opportunities ranging from sport and music to debating, coding, Latin club and community leadership projects.
- **Students made a real difference in the local community** through volunteering, fundraising, charity work, paired reading in primary schools, environmental projects and student leadership roles.



# The Year 7 team



**Connie Wright**  
Year 7 Progress &  
Welfare Manager



**Darren Wall** Year 7  
Progress & Welfare  
Coach



# Further support

---



**Sarah Whittingham**  
Assistant Head teacher,  
**Safeguarding &  
Welfare & Year 7 Link**



**Michaela Child** Assistant  
Head teacher, **Special  
Educational Needs &  
Disabilities Co-ordinator  
(SENDCo)**



**Kate Moore**  
Deputy Head  
teacher **Culture,  
Behaviour and  
Attitudes**

# KS3 Leadership team



**Leanne Hosty**  
Year 7 Progress &  
Welfare Leader



**Steve Fidler**  
KS3 Director





# Admin support team lead



**Mark Brownridge**  
Office Manager



# Steve Fidler - Director of KS3



## Core Student-Focused Responsibilities:

- Academic Monitoring and Intervention
- Pastoral Care and Behaviour Management



# Leanne Hosty - KS3 Progress & Welfare Leader & Head of transition

## Transition

- Visits to primary school
- Transition process from hereon
- What Year 6 students have done during their first 2 days with us
- Form groups

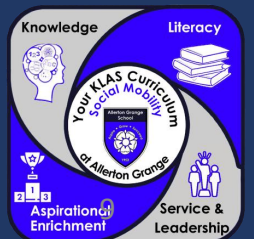




# Year 7 only

## Wednesday 2<sup>nd</sup> Sept 2026

- First week – students bring cash or packed lunch.
- First day - issued with a PIN number for purchasing lunch from Chartwells (our school food company).
- Student's food accounts can have money deposited into them via ParentPay.
- **Allergies – Please make school aware of any allergies.**
  - **Colleagues are in the foyer if you need to discuss this today**



# Supporting your child to thrive

---



**September 2026**

Extended form time with Year 7 to support them settling into the school.



Aspire, Grow, Succeed.



# School Day



08:25 – The school building opens to students

**Registration/Tutor Time 08:30-09:00**

**Session 1 09:00-09:50**

**Session 2 09:50-11:00**

*includes Break time 10:15-10:35*

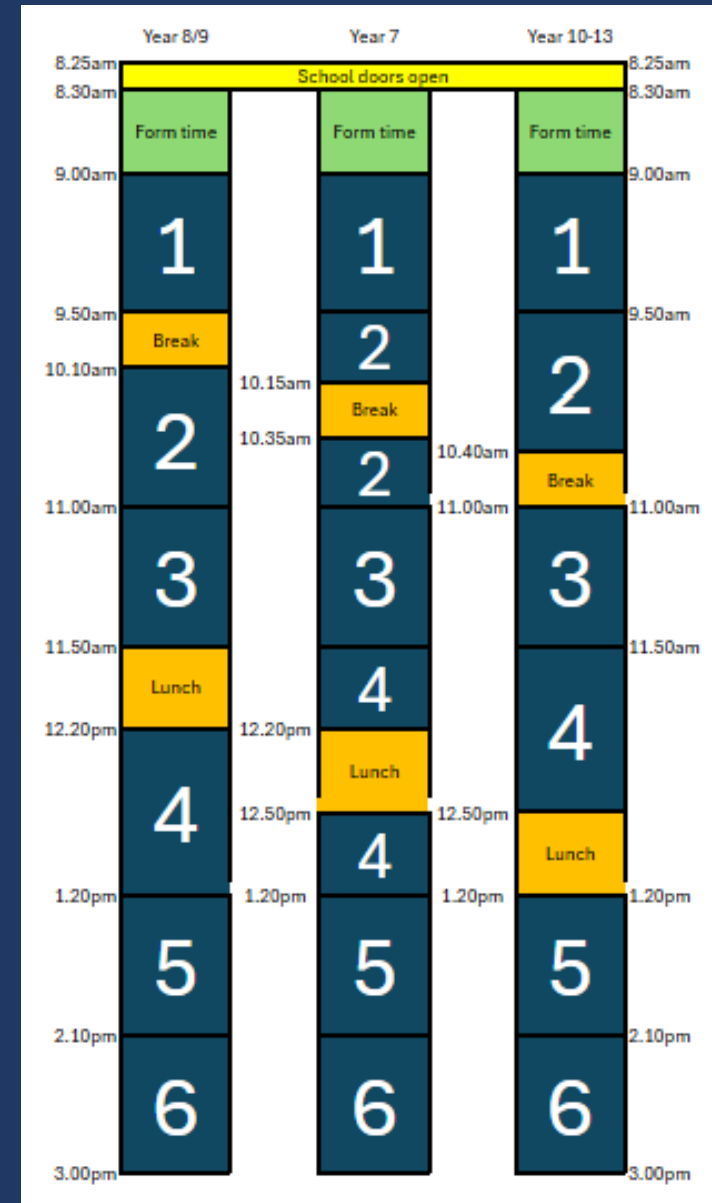
**Session 3 11:00-11:50**

**Session 4 11:50-1.20pm**

*includes Lunch 12:20-12:50*

**Session 5 1:20pm-2:10pm**

**Session 6 2:10pm-3:00pm**



# Uniform & PE kit



## Allerton Grange School uniform

No jewellery other than plain, single, discreet studs, one bangle/band per hand and one plain ring per hand. One **clear** nose stud permitted.

Extreme hairstyles (as decided by the school) are not acceptable eg, hair colouring (natural hair tones only), tram lines, hair shaving – not below a grade 3. Navy blue, plain hair accessories are preferred style

Minimal make-up permitted in years 7 - 11 (as decided by the school)

In the second half of the summer term, blazers and jumpers are optional. Long or short sleeved shirts must be tucked in and always worn with a tie.

### AGS school tie

Blue for KS3 (Years 7, 8, 9)  
Red for KS4 (Years 10,11)

Navy Blue **blazer**  
with school badge

**Faith hats/ hijab/  
turban/ kippah:**  
navy blue, plain in  
style

**Shalwar Kameez/  
tunic:**  
Mid-grey (straight,  
knee-length, classic  
style)

Years 7-10:  
**Optional grey  
V-neck jumper**  
with AGS badge

### White shirt

(longsleeved or  
short sleeved)

**Shirts must be  
tucked in at all  
times**

### Trousers:

Mid-grey  
(straight, full  
length, classic  
style) for boys or  
girls



### Skirts:

Mid-grey  
(straight, knee  
length, classic  
style with or  
without vent,  
pleated or  
non-pleated)  
**NO stretchy  
tube skirts**

### Shoes:

Plain black with  
flat or low heels.  
**No trainers  
permitted**



### Socks:

Mid-grey or black  
ankle socks  
**No logos or designs**

### Tights:

Plain black or  
neutral

Year 11 only:  
**Optional navy  
V-neck jumper**  
with AGS badge

**Coats should  
not be worn  
inside the school  
building**

**Students must  
follow ALL  
uniform rules at  
all times!**



# Uniform & PE kit

**PE Kit:** AGS branded polo shirt  
 AGS branded microfibre long sleeved top  
 Navy shorts (plain, loose sports style shorts, standard 7inch inside leg, no logos, no cycling shorts or tight styles) **OR** navy sports skirt (plain, no logos)  
 Navy 'football style' socks - winter (plain, no logos)  
 Trainers (non-marking and clean for indoor activities)  
 Football boots (compulsory for boys and girls)

**Optional PE kit items:**  
 Plain white sports socks - summer (plain, no logos)  
 Navy jogging bottoms - winter (plain, loose style, no logos, no leggings)



# Shoes

---

- Plain black school shoes
- Flat or low heel
- No trainers permitted



# Shoes

- Plain black school shoes
- Flat or low heel
- No trainers permitted



**These are trainers and are not allowed**





# Uniform & PE kit

## Design School Uniform & Workwear

21-23 The Headrow

Leeds

LS1 6PU

0113 243 6642

[www.designschooluniform.co.uk](http://www.designschooluniform.co.uk)

## Rawcliffes

617- 619 Roundhay Road

Leeds

LS8 4AR

0113 249 4025

[www.rawcliffesleeds.co.uk](http://www.rawcliffesleeds.co.uk)

## School Uniform Shop / Jo Brand

369-373 Harehills Lane

Harehills

Leeds

LS9 6AP

0113 235 1256

[www.uniwears.co.uk](http://www.uniwears.co.uk)

## School Uniform Shop / Jo Brand

18-20 Green Road Meanwood

Leeds

LS6 4JP

0113 230 6272

[www.uniwears.co.uk](http://www.uniwears.co.uk)

Please **label all** items of clothing with your child's name

Aspire, Grow, Succeed.





# School Uniform Exchange

Open to all parents and carers. This includes:

- AGS branded uniform eg blazers, jumpers, PE kit
- Non-branded uniform eg white shirts, grey trousers, grey skirts

If you would like to request any items, please send an email and include the sizes needed to [conniewright@allertongrange.com](mailto:conniewright@allertongrange.com) or [darrenwall@allertongrange.com](mailto:darrenwall@allertongrange.com) we will then check what we have available, and let you know.





- Allows you to 'top up' online - [www.parentpay.com](http://www.parentpay.com)
- You must top up and then 'allocate items' to pay for meals or trips etc.
- Enables you to monitor what your child is eating
- Details of how to access **ParentPay** can be found on our stall outside and on the school website
- Further details **will be posted out to you in September**



# Communication



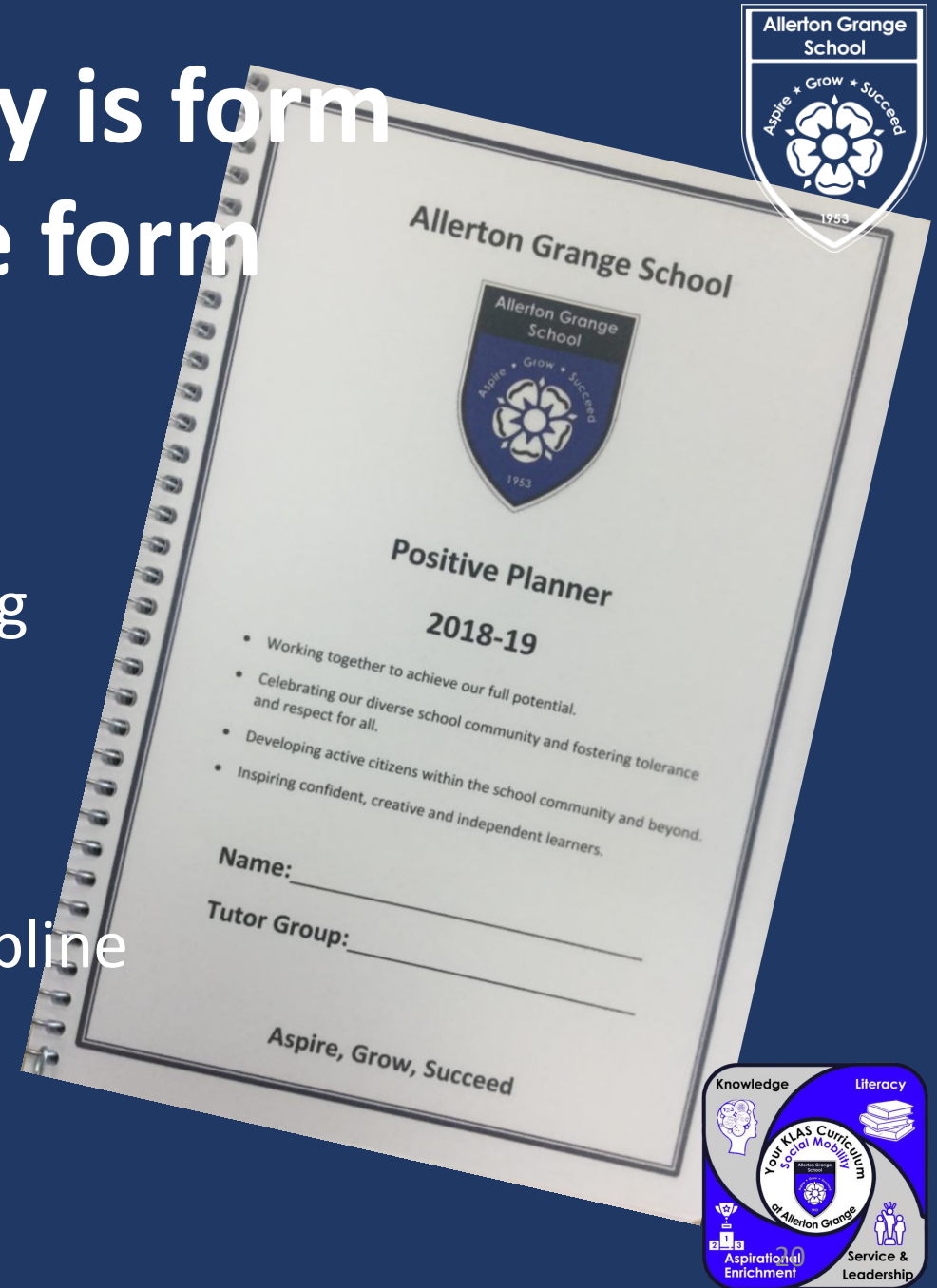
Please download the **ClassCharts** app to your phone at your earliest convenience.

It is the most direct form of communication and allows the teacher, parents, student relationship to be accurate.



# The first port of call every day is form time and registering with the form tutor

- Daily checks on well-being and safeguarding
- Builds a relationship of trust
- Checking uniform and equipment
- Checking planners
- Supporting with our Policy of Positive Discipline
- Knowledge organisers



# ATTENDANCE MATTERS

EVERY SCHOOL DAY COUNTS!

LOST MINUTES = LOST LEARNING!



Every school day counts BUT every minute is equally important!

If your child will not be attending school, parents must inform the school attendance team via the ClassCharts app.

**90% attendance is equivalent to 1 day of absence per fortnight**

Aspire, Grow, Succeed.



AGS is **consistently above** the national average for attendance

## Week beginning 18<sup>th</sup> May:

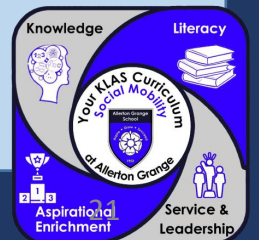
National = 88.3%

AGS = 92.5%

## Year to date

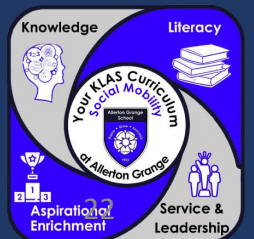
National = 91.7%

AGS = 93.1%



# Mobile Phones

- All devices switched off when students arrive at the school gates
- No ear pods or mobiles are allowed to be used anywhere on site.
- Mobile phones, headphones, ear buds and other devices must be kept switched off at the bottom of bags.



# Organisation for Learning

The following equipment is essential for all students:

- Bag - large enough to hold several books and equipment
- Pen - black and blue but also a **green pen**

- **Whiteboard pen**
- Sharpener
- Ruler
- Rubber
- Calculator- scientific if possible
- Glue stick
- Planner - provided in September
- **Tissues (on a needs basis)**



# Free school meals – Important changes



## Mark Brownridge Office Manager

- From September 2026, every child in a household receiving Universal Credit will be entitled to free school meals.
- Parents should check their eligibility and apply through their school or local authority.
- Families currently receiving free school meals should not assume entitlement will continue automatically, as previous transitional protections are ending.



# Michaela Child

---

Assistant Head teacher  
Special Educational Needs & Disabilities Co-ordinator (SENDCo)



# SEND at Allerton Grange



- Student passports shared with all teachers
- Passports will be emailed out in September. Parent input welcome.
- Assessments/Screening
- Graduated approach
- Intervention packages put in place to meet need on half termly basis
- SEND surgery, parents' evenings and review day

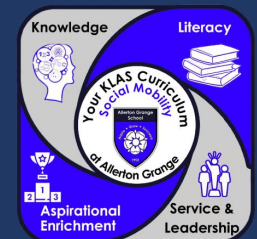
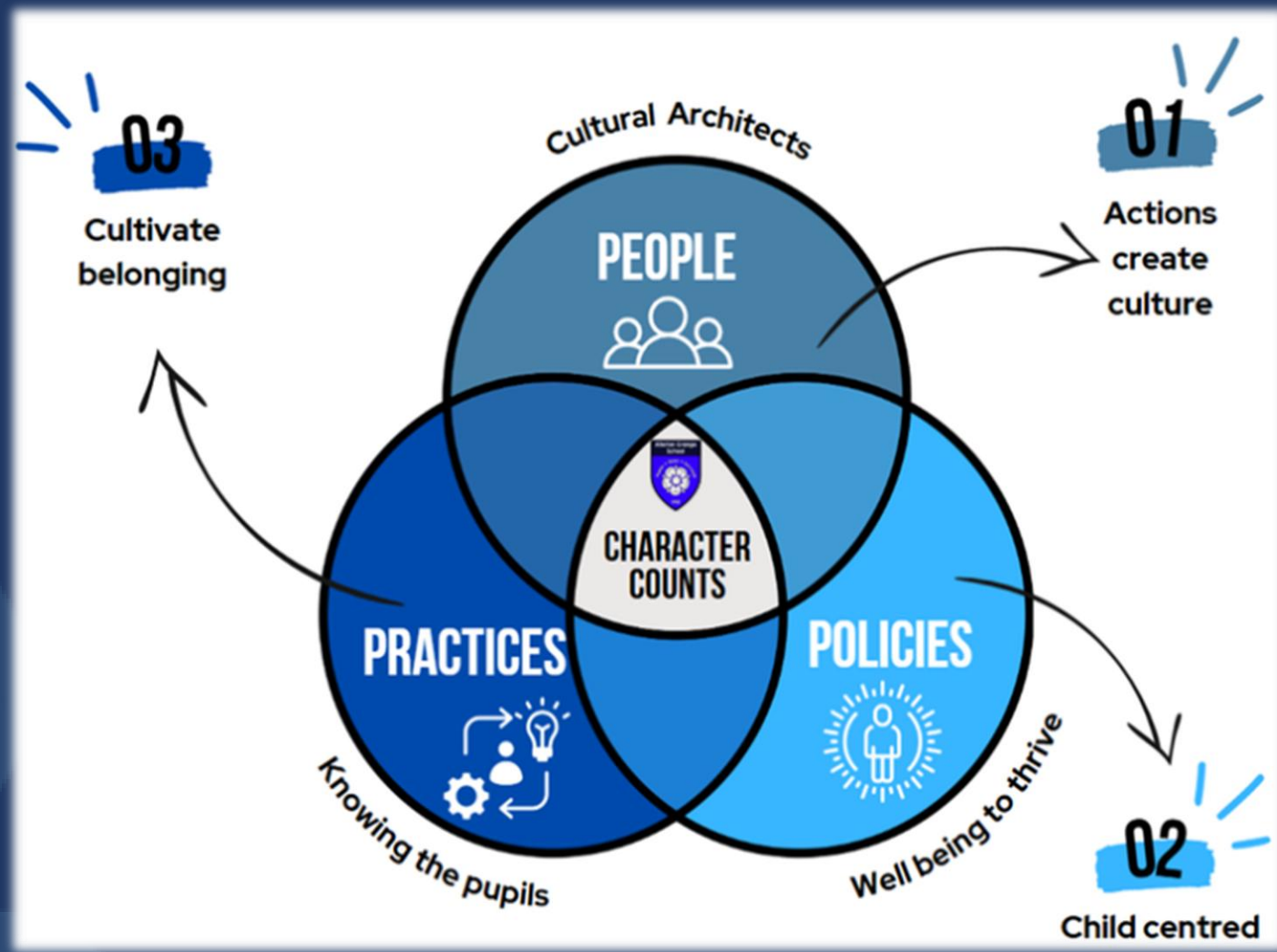
**Please share diagnostic or other helpful paperwork with us**

[send@allertongrange.com](mailto:send@allertongrange.com)

- SENDCO - Michaela Child
- Assistant SENDCO – Jane Dempster
- CL for SEND Inclusion - Karen Chappell
- SEND Admin – Sally Lostroh
- Dyslexia/literacy – Andrea Petersen
- Neurodiversity Coach – Carolyn Suguira
- SEMH Coach – Kirstie Fry
- VI - Kate Ludlow and Chloe Marples
- Teacher of SEND – Katherine Neilson

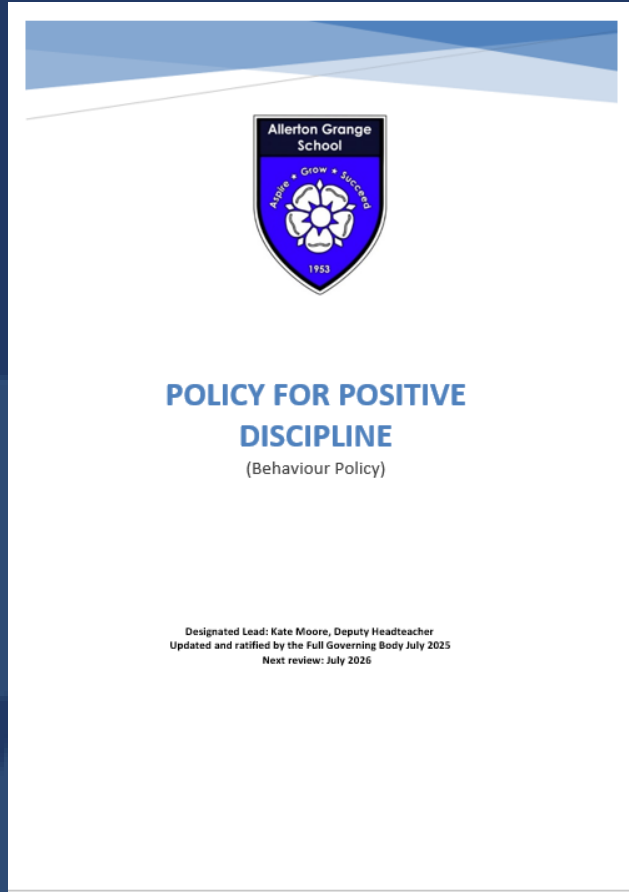
# Kate Moore - Deputy Head teacher

## *Culture, Behaviour & Attitudes*





# How do we foster a positive school community?



## *Policy for Positive Discipline (PPD)*

Focus on recognising positive behaviour and celebrating positive character traits and efforts

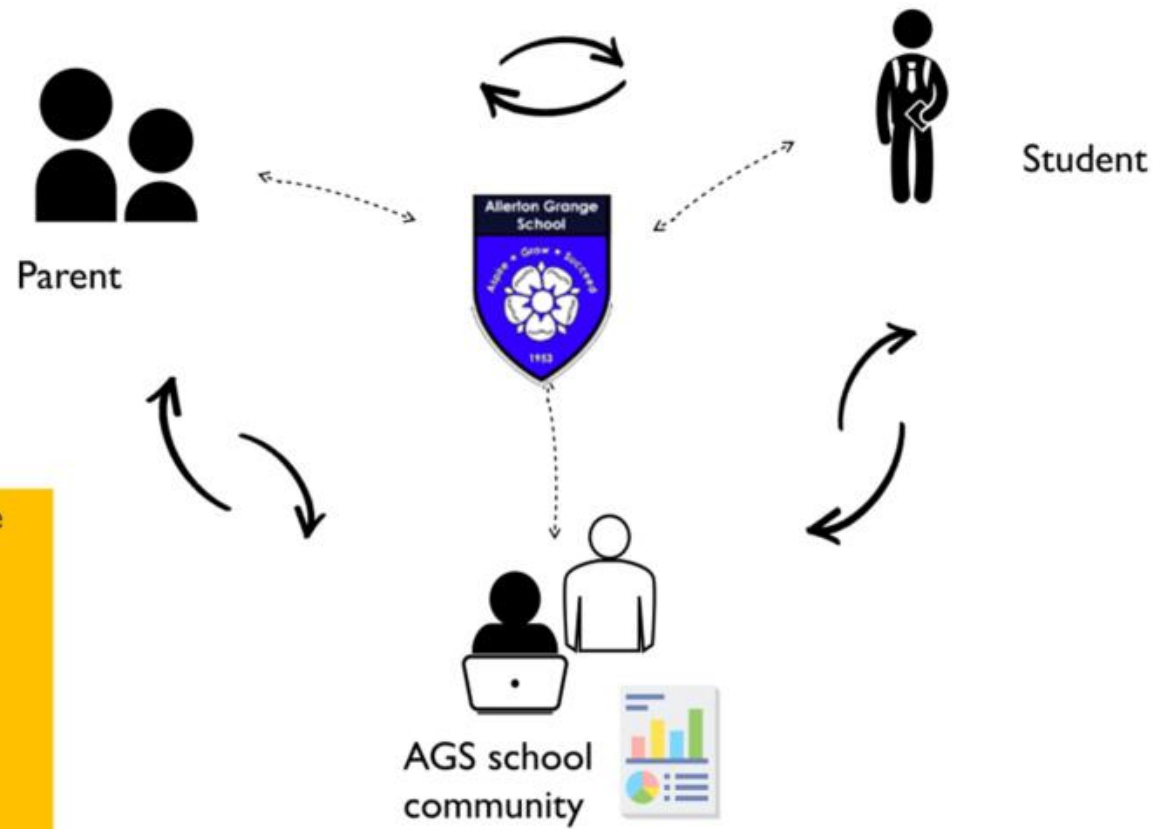


# AGS Virtues



# AGS: Home School Agreement

## Working Together



Parental support ... can promote the self-regulation in children necessary to achieve academic goals including goal-setting, planning, perseverance, and the management of time, materials, attentiveness, and Emotions (Zimmerman 2010).

**EEF**





Thank you, we look  
forward to seeing you in  
September

**Year 7 only**  
Wednesday 2<sup>nd</sup> Sept 2026

Aspire, Grow, Succeed.

