

# The FACE it revision model in GCSE DRAMA

1.

## LEARN THE FACTS



- Flash cards – key scenes. Include performance and design
- Graphic organisers – could use to track how ideas about characters are presented throughout the play
- Mind maps – All main characters, across the entire play

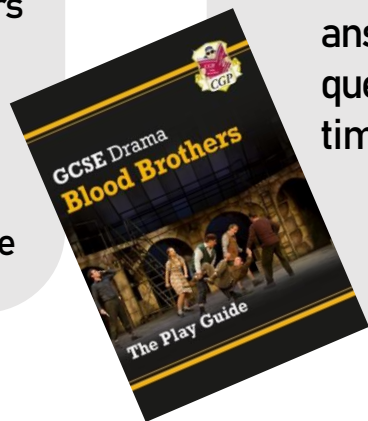


2.

## APPLY IN CONTEXT

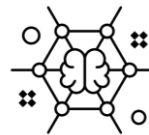


- Can you explain how and why you would create meaning in every scene?
- Are you using the language of Drama?
- Create model answers for each question without a time limit.



3.

## CONNECT IDEAS



- What language are you using in both Blood Brothers and Live Theatre?
- The forensic level of detail used for voice, movement and interaction needs to be the same for each character in each key moment

4.

## TEST IN EXAM CONDITIONS



- Use past exam questions to rehearse the process of responding under time pressure.
- Start your practice with the 20 mark question then use the mark schemes on AQA and model full mark answers to gauge if you've hit all the criteria