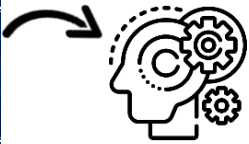


# The FACE it revision model in GCSE Computer Science

1.

## LEARNT THE FACTS



- Personalised learning checklist
- Flash cards
- Mind maps
- Summary of information pages
- Self quizzing



2.

## APPLY IN CONTEXT

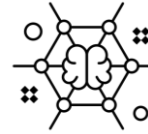


- Tackle questions where the knowledge is tested in context – beyond straight forward recall.
- C&D Smart Revise
- Past Paper Qs by topic on SharePoint

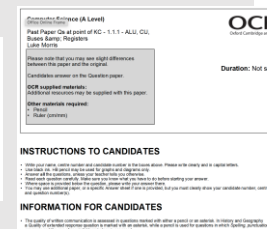
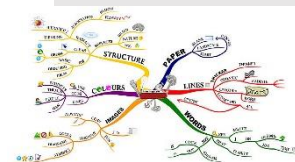


3.

## CONNECT IDEAS

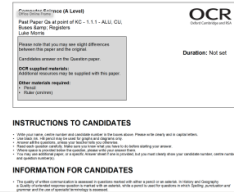


- Revisit mind maps and make connections.
- Attempt essay style questions that draw on knowledge from multiple areas.



4.

## TEST IN EXAM CONDITIONS



- Use past exam Qs and mark schemes to rehearse responding under time pressure.
- Will be provided by teacher
- Can also be found on SharePoint revision folder

