

Ensure parents and students have access to:



- FACE IT revision model (PDF) – specific to your team



- Revision check list (PDF)

- Exam board specification (PDF)

They should be able to:	Check
<ul style="list-style-type: none"> Describe the aetiological and clinical manifestations for the cause of disease Describe the Triads of the four human and the three of others Explain the pathogenesis of disease and relate to the clinical features of the disease Explain the pathogenesis of disease and relate to the clinical features of the disease Explain the pathogenesis of disease and relate to the clinical features of the disease Explain the pathogenesis of disease and relate to the clinical features of the disease 	<input type="checkbox"/>
<ul style="list-style-type: none"> Describe the aetiological and clinical manifestations for the cause of disease Describe the Triads of the four human and the three of others Explain the pathogenesis of disease and relate to the clinical features of the disease Explain the pathogenesis of disease and relate to the clinical features of the disease Explain the pathogenesis of disease and relate to the clinical features of the disease Explain the pathogenesis of disease and relate to the clinical features of the disease 	<input type="checkbox"/>
<ul style="list-style-type: none"> Describe the aetiological and clinical manifestations for the cause of disease Describe the Triads of the four human and the three of others Explain the pathogenesis of disease and relate to the clinical features of the disease Explain the pathogenesis of disease and relate to the clinical features of the disease Explain the pathogenesis of disease and relate to the clinical features of the disease Explain the pathogenesis of disease and relate to the clinical features of the disease 	<input type="checkbox"/>
<ul style="list-style-type: none"> Describe the aetiological and clinical manifestations for the cause of disease Describe the Triads of the four human and the three of others Explain the pathogenesis of disease and relate to the clinical features of the disease Explain the pathogenesis of disease and relate to the clinical features of the disease Explain the pathogenesis of disease and relate to the clinical features of the disease Explain the pathogenesis of disease and relate to the clinical features of the disease 	<input type="checkbox"/>

FACE it revision model

Students should use FACE it, to support their revision planning and as a diagnostic tool:

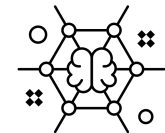
Have you learned your **F**ACTs?



Have you practised **A**pplying your knowledge in context questions?



Have you started to **C**onnect ideas with more synoptic questions?



Have you tested yourself in timed **E**xam conditions?



The FACE it revision model in A Level English Literature

1.

LEARNT THE FACTS



- Flash cards (terminology / key quotes)
- Bullet point summaries of texts
- Mind maps categorising ideas from key concepts
- Quizlet / self-testing

2.

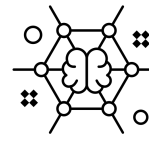
APPLY IN CONTEXT



- Characters / themes:
How is ... presented?

3.

CONNECT IDEAS



- For each text what are the key moments linked to topics.
- How are these texts typical of the genre?

4.

TEST IN EXAM CONDITIONS



- All past papers and mark schemes are available on www.physicsandmathstutor.com