

Ensure parents and students have access to:



- FACE IT revision model (PDF) – specific to your team



- Revision check list (PDF)

- Exam board specification (PDF)

They should be able to:	Check
<ul style="list-style-type: none"> Describe the aetiological and clinical manifestations for the cause of disease Describe the Triads of the four human and the three of others Explain the pathogenesis of disease and relate to the clinical features of the disease Explain the pathogenesis of disease and relate to the clinical features of the disease Explain the pathogenesis of disease and relate to the clinical features of the disease Explain the pathogenesis of disease and relate to the clinical features of the disease 	<input type="checkbox"/>
<ul style="list-style-type: none"> Describe the aetiological and clinical manifestations for the cause of disease Describe the Triads of the four human and the three of others Explain the pathogenesis of disease and relate to the clinical features of the disease Explain the pathogenesis of disease and relate to the clinical features of the disease Explain the pathogenesis of disease and relate to the clinical features of the disease Explain the pathogenesis of disease and relate to the clinical features of the disease 	<input type="checkbox"/>
<ul style="list-style-type: none"> Describe the aetiological and clinical manifestations for the cause of disease Describe the Triads of the four human and the three of others Explain the pathogenesis of disease and relate to the clinical features of the disease Explain the pathogenesis of disease and relate to the clinical features of the disease Explain the pathogenesis of disease and relate to the clinical features of the disease Explain the pathogenesis of disease and relate to the clinical features of the disease 	<input type="checkbox"/>
<ul style="list-style-type: none"> Describe the aetiological and clinical manifestations for the cause of disease Describe the Triads of the four human and the three of others Explain the pathogenesis of disease and relate to the clinical features of the disease Explain the pathogenesis of disease and relate to the clinical features of the disease Explain the pathogenesis of disease and relate to the clinical features of the disease Explain the pathogenesis of disease and relate to the clinical features of the disease 	<input type="checkbox"/>

FACE it revision model

Students should use FACE it, to support their revision planning and as a diagnostic tool:

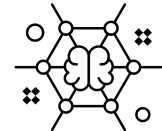
Have you learned your **F**ACTs?



Have you practised **A**pplying your knowledge in context questions?



Have you started to **C**onnect ideas with more synoptic questions?



Have you tested yourself in timed **E**xam conditions?



The FACE it revision model in A Level English Language

1.

LEARNT THE FACTS



- Flash cards (terminology / theories / concepts)
- Bullet point summaries of theories
- Mind maps categorising ideas from key concepts and theories
- Quizlet / self-testing

2.

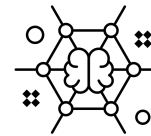
APPLY IN CONTEXT



- Analyse how language is used to create meanings and representations in ANY text
- Read articles about linguistic topics (google search / guardian / the conversation) and analyse how language is used to present views about...

3.

CONNECT IDEAS



- For each linguistic topic, link likely AO1 features and AO2 theories and concepts
- Which theories support each other and which can be used to challenge?

4.

TEST IN EXAM CONDITIONS



- Use the question bank for timed planning / timed writing
- All past papers and mark schemes are available on www.physicsandmathstutor.com