

Ensure parents and students have access to:



- FACE IT revision model (PDF) – specific to your team



- Revision check list (PDF)

- Exam board specification (PDF)

They should be able to:	Check
<ul style="list-style-type: none"> Describe the aetiology and origin of neoplasia for the cause of cancer Describe the theory of the four humours and the four qualities Explain the significance of neoplasia and define a tumour and its classification Explain the role of the immune system in the control of neoplasia Explain the methods to diagnose disease (both in situ and in vivo) Explain why the use of drugs is important in the treatment of cancer 	<input type="checkbox"/>
<ul style="list-style-type: none"> Describe the aetiology and origin of neoplasia for the cause of cancer Describe the theory of the four humours and the four qualities Explain the significance of neoplasia and define a tumour and its classification Explain the role of the immune system in the control of neoplasia Explain the methods to diagnose disease (both in situ and in vivo) Explain why the use of drugs is important in the treatment of cancer 	<input type="checkbox"/>
<ul style="list-style-type: none"> Describe the role of the physician, apothecary and surgeon in treatment and care Describe the role of the patient, apothecary and surgeon in treatment and care Explain why some conditions of care were more important than others (level of training, cost, effectiveness, scope, location, availability, safety, etc.) Describe the role of the Church in living medicine and the role of the state 	<input type="checkbox"/>
<ul style="list-style-type: none"> Explain the difference between treatment and prevention Describe the aetiology of cancer (genetics, lifestyle, environment) Describe the aetiology of cancer (genetics, lifestyle, environment) Describe the aetiology of cancer (genetics, lifestyle, environment) Describe the government's public health policies (e.g. smoking, alcohol, etc.) Describe the government's public health policies (e.g. smoking, alcohol, etc.) 	<input type="checkbox"/>
<ul style="list-style-type: none"> Describe the aetiology and origin of neoplasia for the cause of cancer Describe the theory of the four humours and the four qualities Explain the significance of neoplasia and define a tumour and its classification Explain the role of the immune system in the control of neoplasia Explain the methods to diagnose disease (both in situ and in vivo) Explain why the use of drugs is important in the treatment of cancer 	<input type="checkbox"/>

FACE it revision model

Students should use FACE it, to support their revision planning and as a diagnostic tool:

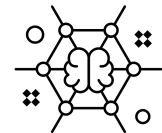
Have you learned your **F**ACTs?



Have you practised **A**pplying your knowledge in context questions?



Have you started to **C**onnect ideas with more synoptic questions?



Have you tested yourself in timed **E**xam conditions?



The FACE it revision model in A Level English Literature

1.

LEARNT THE FACTS



- Flash cards (terminology / key quotes)
- Bullet point summaries of texts
- Mind maps categorising ideas from key concepts
- Quizlet / self-testing

2.

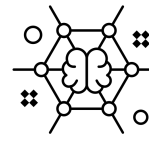
APPLY IN CONTEXT



- Characters / themes:
How is ... presented?

3.

CONNECT IDEAS



- For each text what are the key moments linked to topics.
- How are these texts typical of the genre?

4.

TEST IN EXAM CONDITIONS



- All past papers and mark schemes are available on www.physicsandmathstutor.com